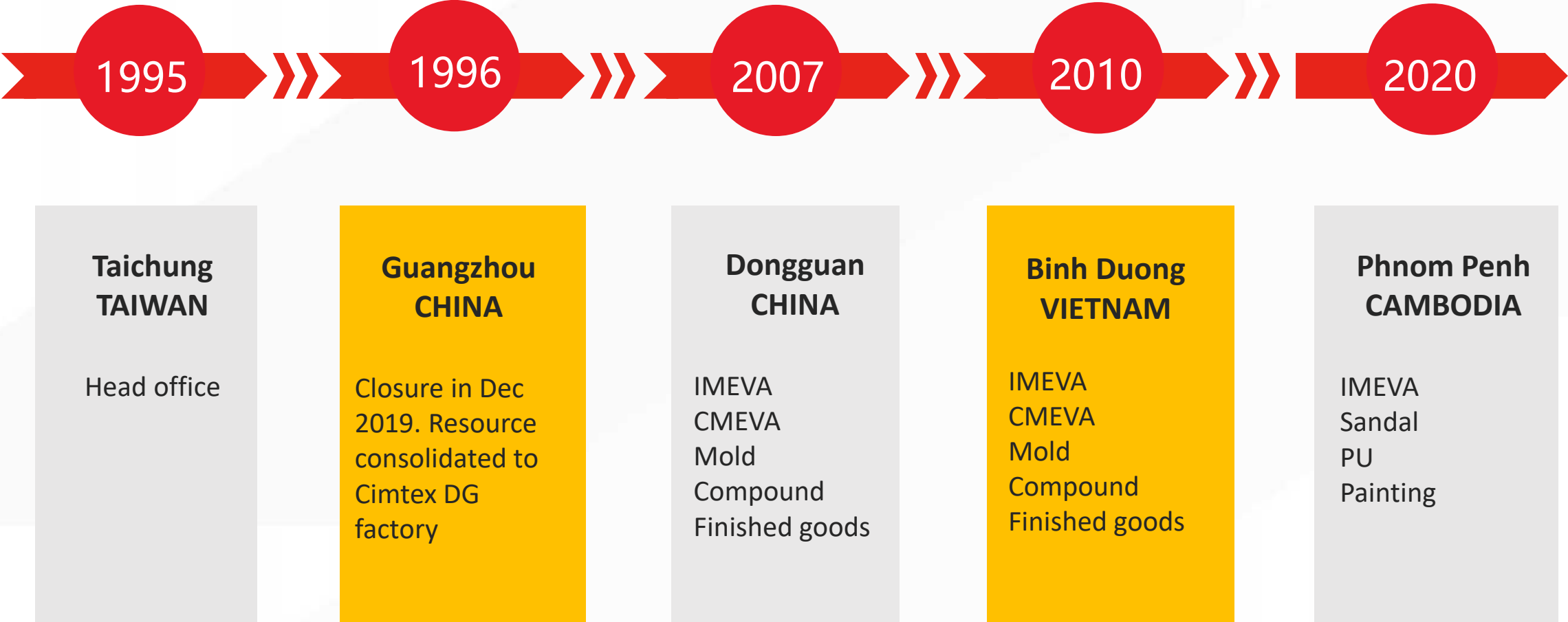




SCOTTIE HSU
scottie.hsu@cimtex.com.tw
2023 Q1

Milestone





Guangzhou, China

****closure in end of 2019**



Dongguan, China

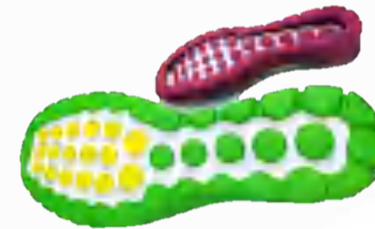
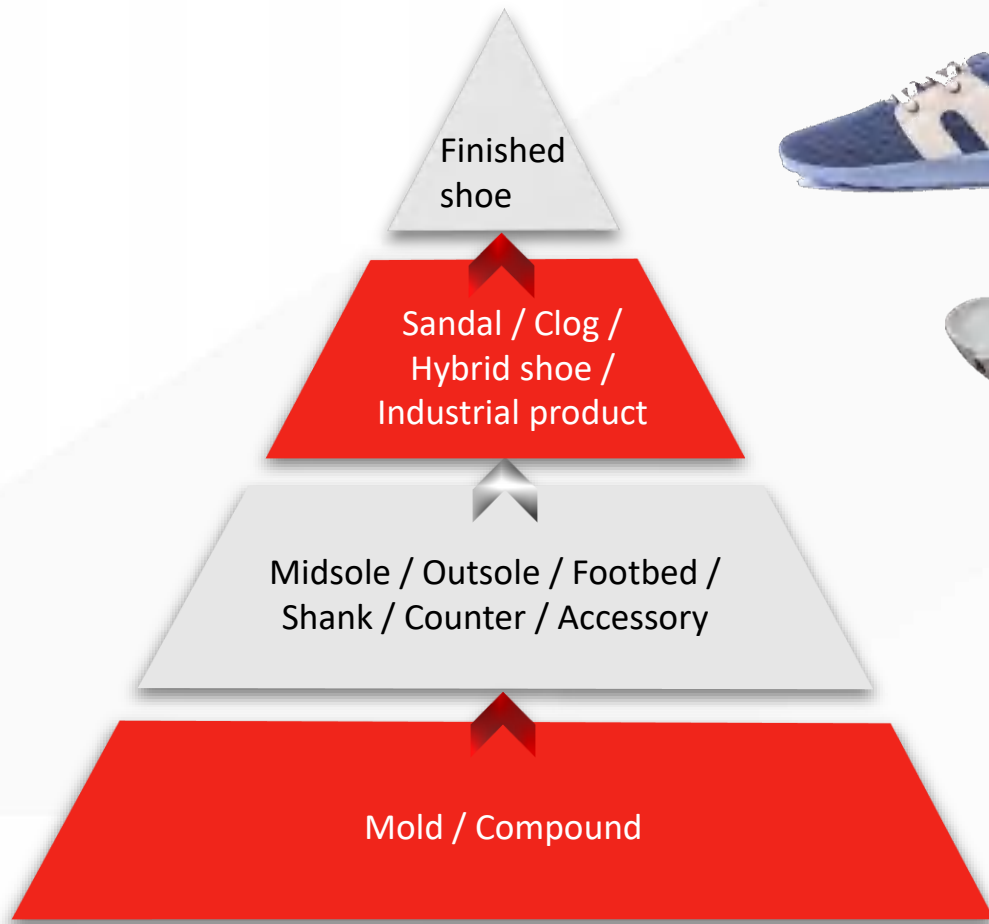


Phnom Penh, Cambodia



Binh Duong, Vietnam

Coverage of capability



Business and customers

FG business

Finished shoe

Sandal / Clog / Hybrid shoe / Industrial product



crocs™

Component business

Midsole / Outsole / Footbed / Shank / Counter / Accessory

Mold / Compound



DECKERS



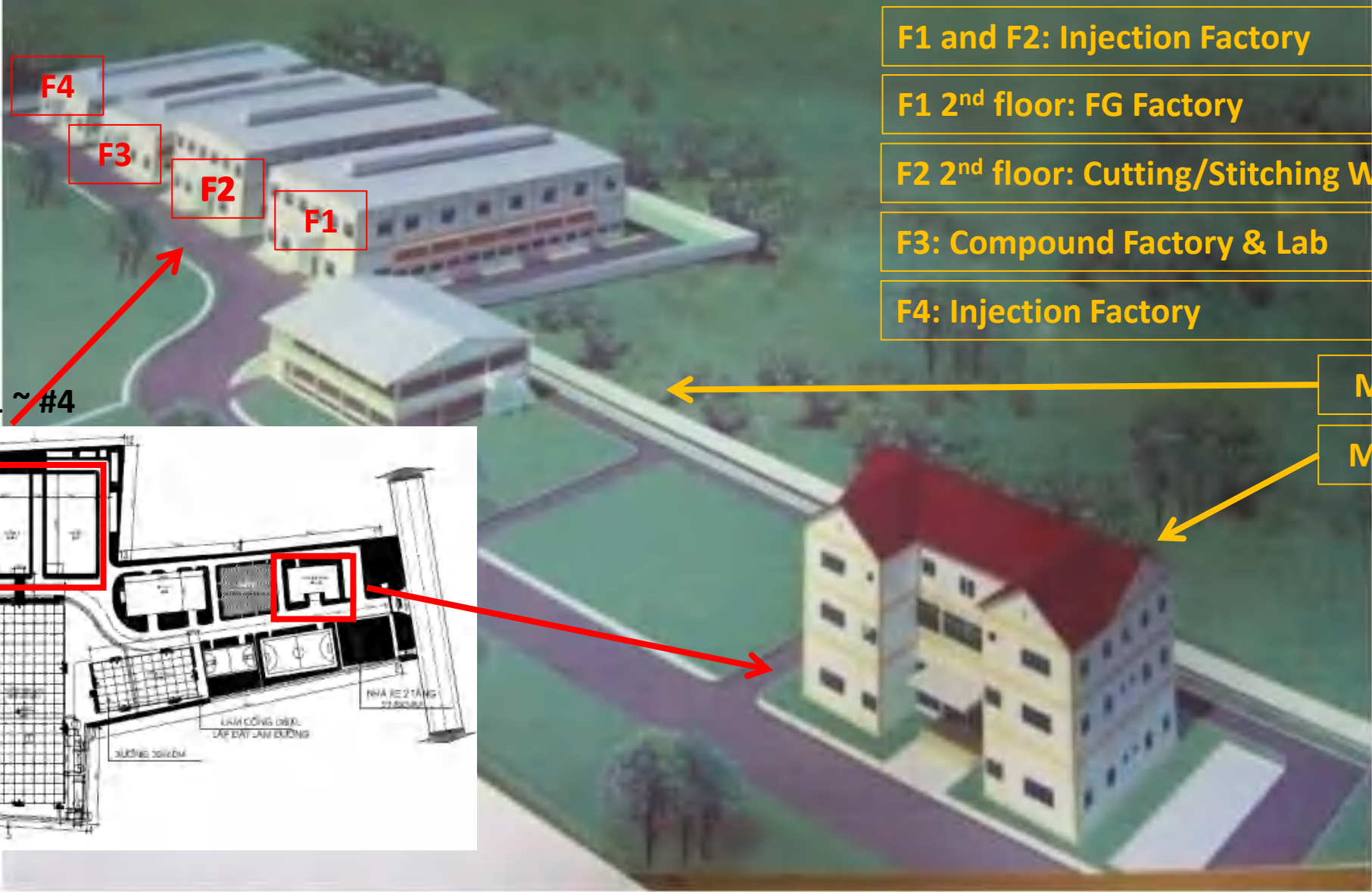
LACOSTE 

EVATECH VIETNAM

Location – 1 hour away from Ho Chi Minh



Campus layout



F1 and F2: Injection Factory

F1 2nd floor: FG Factory

F2 2nd floor: Cutting/Stitching Workshop

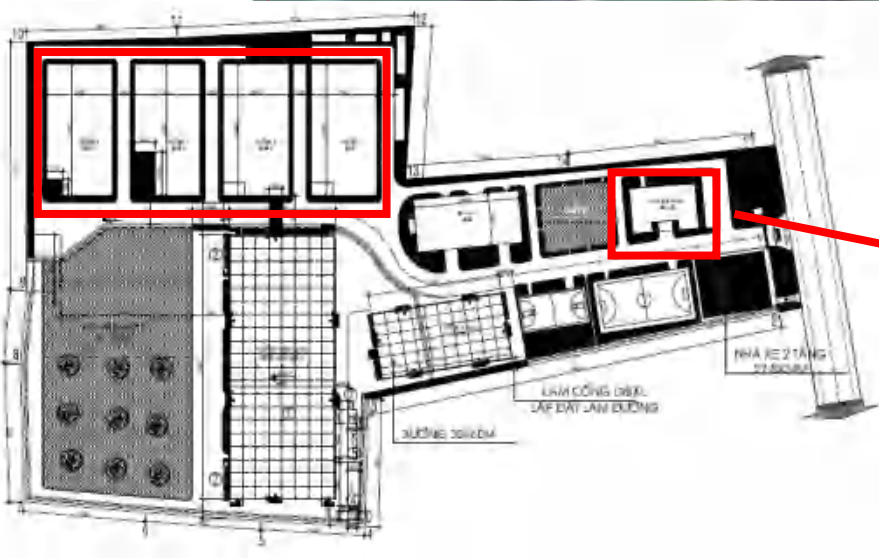
F3: Compound Factory & Lab

F4: Injection Factory

Mold Shop

Main Office

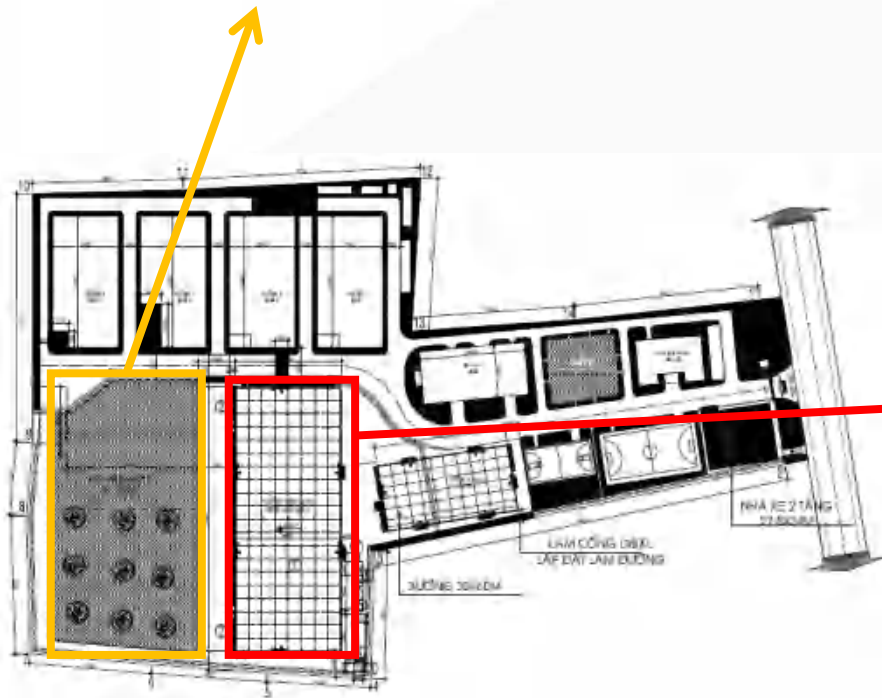
Factory #1 ~ #4



Factory #5 and future plan

Future Factory #6

- 108*72m, 3 floors
- Plan for FG assembly etc



Factory #5

- 6,000m²/floor, 3 floors
- Sandal assembly and cementing
- CMEVA & multi-color facility
- FG Warehouse



ESG – environmental, social, and governance

- A Better Work factory
- Disney ILS and major brands' certification in social compliance
- 100% renewable energy under I-REC Standard since 2020 (<https://www.irecstandard.org>)
- Industrial water treatment and recycle system
- Solar power project under evaluation
- Promoting ecofriendly compound including recycled EVA, bio-EVA, coffee grounds, R-PET, seaweed, silicon dioxide, etc
- RCS (Recycle Claim Standard 2.0) compliant. Working toward GRS (Global Recycled Standard)



FACILITY

Finished shoe production



- **Bottom expertise extending to finished products**
- **Sandal injection+assembly LEAN lines**
- **400K/month cementing and 400K sandal assembly**
- **Space available for immediate capacity increase**





Laboratory

- **SATRA certified**



Compound department

- Automatic weighing system
- 600 tons/month



- No human error
- 40% labor saving
- Traceability
- Upgradeability
- Environment friendly

Compound development – video

High resilience



High absorbing

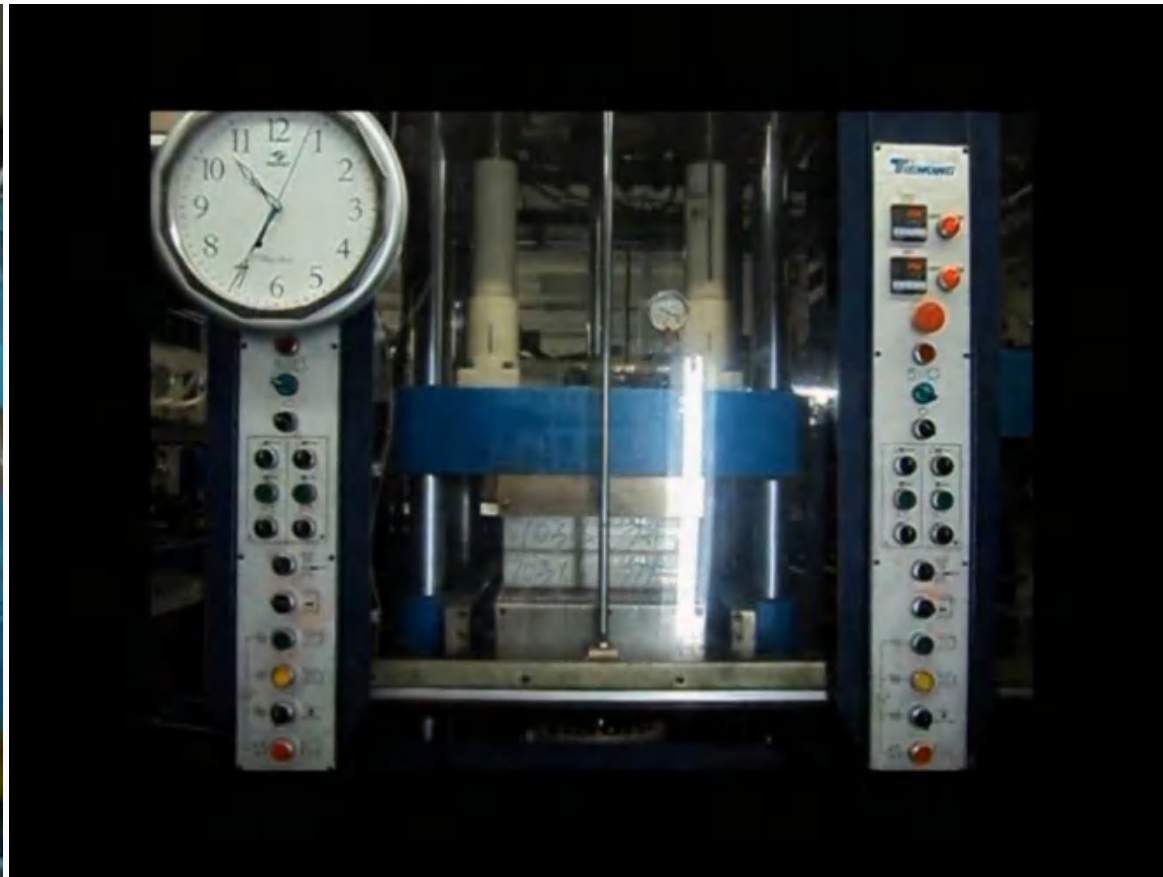


Precise mold is a key

- Evatech Vietnam mold shop has shifted focus to maintenance and repair only since covid-19 outbreak and now works with a partnered mold shop for development and production. The partnered mold shop has 200 sets monthly capacity.
- Cimtex China mold shop is in operation and supports Evatech Vietnam together with the partnered mold shop.
- Mold/tooling is one of the first key and basic elements for future molding process especially for components requiring higher tech and knowhow integration, for example, multi-color/density.

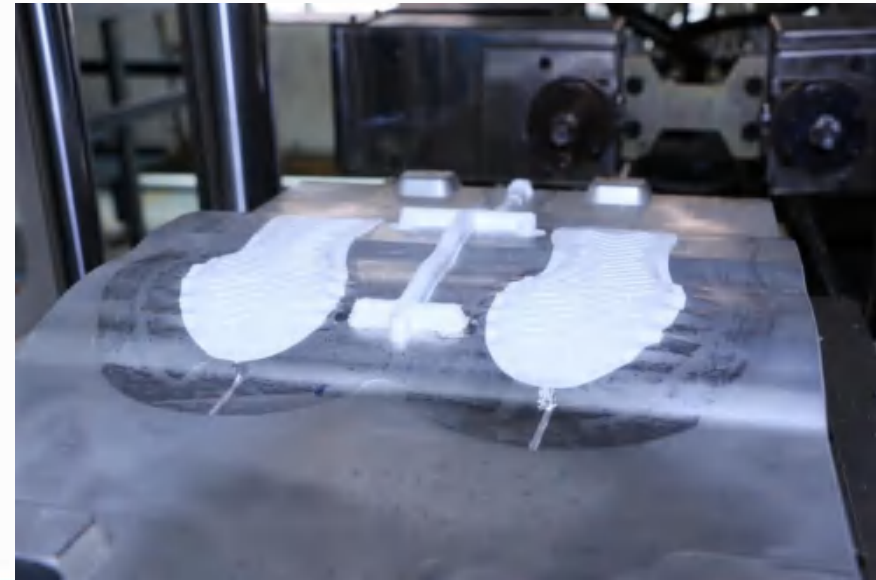


IMEVA



Multi-color/hardness technology

- Technology for more flexible 2 or more-color/hardness design
- Integration from molding, compound, precise injection to foaming



Automatic CMEVA facility

- **Evatech Vietnam uses fully automatic CMEVA facility**
- **Electricity based VS conventional boiler heating for better temperature control and environment support**
- **Automatic pellet weighing VS manual weighing**
- **Automatic pellet filling VS manual filling**
- **Automatic heating/cooling switch VS manual operation**

Automatic pellet weighing

Accuracy and 50%+ efficiency improved

Traditional



Ours



Automatic pellet filling

50%+ efficiency improved

Traditional



Ours



Automatic heating/cooling switch

Less labor intensive, better working environment, and 10% efficiency improved

Traditional



Ours



Summary – Evatech Vietnam

| | |
|--|--------------------------------|
| Opened: 2010 Dec | Location: Binh Duong |
| Profile | |
| Campus: 55,000 M² | Employee: 1,200 |



| | |
|-----------------------------------|-------------------------|
| Cementing: 400K Assembly: 400K | IMEVA: 3,000K |
| Monthly Capacity | |
| Multi-color EVA: 250K | CMEVA: 100K |

- Partnered resource and/or future plan**
1. Mold shop
 2. Printing/painting
 3. Super critical foaming
 4. RB/TPU and other components

Questions and Discussions

Contact information

□ Head Office:

Taichung, Taiwan

Steve Hsu / CEO / steve.hsu@cimtex.com.tw / +886-424224950

□ Binh Duong, Vietnam:

Evatech Vietnam Co., LTD

DH 409, Ba Tri Area, Tan Hiep, Tan Uyen, Binh Duong Province, Vietnam

Tel: +84-274-3655889

Scottie Hsu / Vice General Manager / scottie.hsu@cimtex.com.tw / +84-933096298

□ Dongguan, China:

Cimtex Composite MFG Co., LTD

Jiling Park, Lianping Village, Dalingshan Town, Dongguan, China

Tel: +86-769-82789168

Nick Kao / Executive Director / nick.kao@cimtex.com.cn / +86-18038367898

□ Phnom Penh, Cambodia:

Gao Da Co., LTD

Phum Pery Thom, Sangkat Presor, Kham Dangkor, Phnom Penh, Cambodia

Hugo Shih / Director / gaoda@cimtex.com.vn / +885-973475888

PRODUCT SAMPLES































